



GMT MONTHLY MEMBERSHIP PROGRESS REPORT

Results as of: 3/31/2024

Multiple District 325

LOCATION: NEPAL

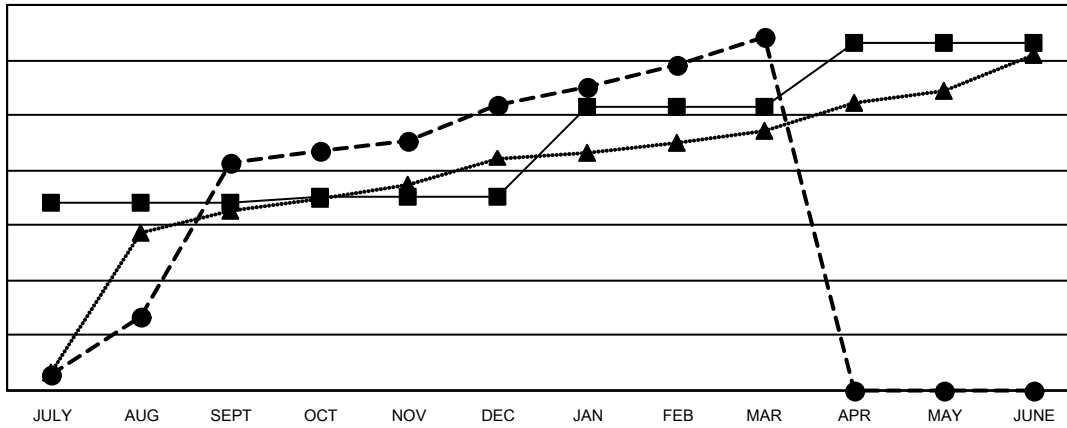
GMT: OPEN

GMT CA 6 - S

| Clubs | | | |
|-----------------------|---------------|-----------|---------------|
| RESULTS FOR 2023-2024 | | | |
| QUARTER | NEW CLUB GOAL | NEW CLUBS | DROPPED CLUBS |
| JULY/AUG/SEPT | 136 | 166 | 36 |
| OCT/NOV/DEC | 5 | 41 | 120 |
| JAN/FEB/MAR | 65 | 50 | 38 |
| APR/MAY/JUNE | 47 | 0 | 0 |

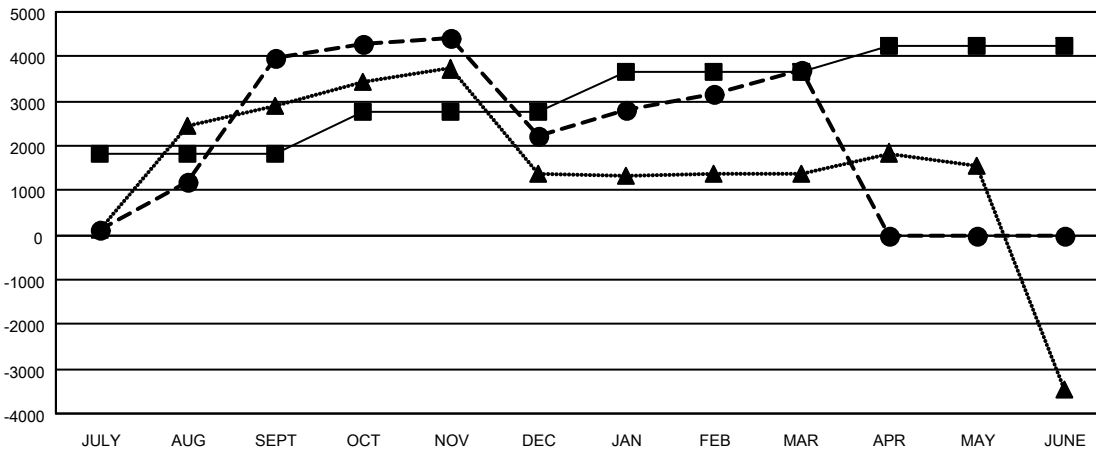
| Members | | | |
|-----------------------|------------------------|----------------------|--|
| RESULTS FOR 2023-2024 | | | |
| QUARTER | MEMBER GROWTH NET GOAL | MEMBER GROWTH ACTUAL | DROPPED MEMBERS ACTUAL (including transfers) |
| JULY/AUG/SEPT | 1,804 | 6,399 | 2,198 |
| OCT/NOV/DEC | 957 | 2,537 | 4,218 |
| JAN/FEB/MAR | 879 | 3,144 | 1,409 |
| APR/MAY/JUNE | 615 | 0 | 0 |

GOALS AND ACTUAL NEW CLUBS CUMULATIVE



- - CURRENT YEAR GOALS FOR NEW CLUBS
- - CURRENT YEAR ACTUAL NEW CLUBS
- ▲ - LAST YEAR ACTUAL NEW CLUBS

GOALS AND ACTUAL MEMBERS CUMULATIVE



- - MEMBER GROWTH NET GOAL
- - MEMBER GROWTH ACTUAL
- ▲ - LAST YEAR MEMBERSHIP ACTUAL

| | | |
|---|---|--|
| DROPPED CLUBS: 194 | 1354 CLUBS OF 2096 ADDED 1 OR MORE NEW MEMBERS | GENDER DISTRIBUTION MALE 30,481 (68.80%) FEMALE 13,820 (31.20%) |
| DROPPED MEMBERS DECEASED 32 CLUB CANCELLED 2,853 OTHER 4,940 TOTAL 7,825 | CLICK HERE FOR CUMULATIVE MEMBERSHIP DATA | TOTAL FAMILY UNIT MEMBERS 32,351 FAMILY MEMBERS PAYING HALF DUES 22,672 |